

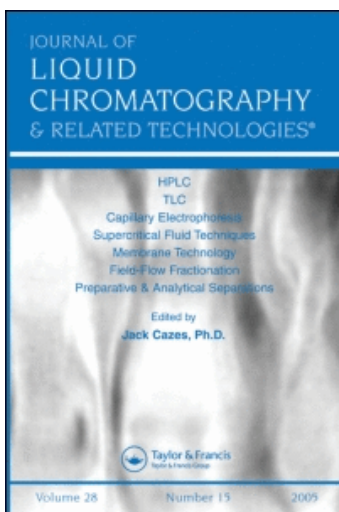
This article was downloaded by:

On: 24 January 2011

Access details: *Access Details: Free Access*

Publisher *Taylor & Francis*

Informa Ltd Registered in England and Wales Registered Number: 1072954 Registered office: Mortimer House, 37-41 Mortimer Street, London W1T 3JH, UK



Journal of Liquid Chromatography & Related Technologies

Publication details, including instructions for authors and subscription information:

<http://www.informaworld.com/smpp/title~content=t713597273>

The Correlations between Capacity Factors k' and R_M Values in Liquid Column and Thin-Layer Chromatography

Jan K. Rożyło^a; Joanna Gross^a; Małgorzata Ponieważ^a; Roman Lodkowski^a; Bogusław Buszewski^a

^a Institute of Chemistry, Maria Curie-Skłodowska University, Lublin, POLAND

To cite this Article Rożyło, Jan K. , Gross, Joanna , Ponieważ, Małgorzata , Lodkowski, Roman and Buszewski, Bogusław(1984) 'The Correlations between Capacity Factors k' and R_M Values in Liquid Column and Thin-Layer Chromatography', *Journal of Liquid Chromatography & Related Technologies*, 7: 7, 1301 – 1312

To link to this Article: DOI: 10.1080/01483918408074045

URL: <http://dx.doi.org/10.1080/01483918408074045>

PLEASE SCROLL DOWN FOR ARTICLE

Full terms and conditions of use: <http://www.informaworld.com/terms-and-conditions-of-access.pdf>

This article may be used for research, teaching and private study purposes. Any substantial or systematic reproduction, re-distribution, re-selling, loan or sub-licensing, systematic supply or distribution in any form to anyone is expressly forbidden.

The publisher does not give any warranty express or implied or make any representation that the contents will be complete or accurate or up to date. The accuracy of any instructions, formulae and drug doses should be independently verified with primary sources. The publisher shall not be liable for any loss, actions, claims, proceedings, demand or costs or damages whatsoever or howsoever caused arising directly or indirectly in connection with or arising out of the use of this material.

THE CORRELATIONS BETWEEN CAPACITY FACTORS k'
AND R_M VALUES IN LIQUID COLUMN AND
THIN - LAYER CHROMATOGRAPHY

Jan K. ROŻYŁO, Joanna GROSS, Małgorzata PONIEWAŻ,
Roman LODKOWSKI and Bogusław BUSZEWSKI

Institute of Chemistry, Maria Curie-Skłodowska
University, Pl.M.Curie-Skłodowskiej 3,
20-031 Lublin, POLAND

ABSTRACT

The purpose of this studie being carried out is to define some regularities between Thin-layer and Liquid Column Chromatography; i.e. between experimental obtained and theotetical calculated R_M -values and experimental obtained $\log k'$ -values for some non-active organic substances in mixed binary solvents systems. It was studied the kind these correlations change with changing mobile phase compositions. The present paper is a certain aspect of new studies on possibilities of the use Thin-layer Chromatography as a pilot technique for Liquid Column Chromatography (1,2). In a study on the optimization of chromatographic process it is necessary to define the correlations between R_M -values which characterize the retention in TLC and k' -values which characterize the retention in in LCC.

In the paper the changes of these correlations with the changes of mobile phase compositions are studied. The conformity between theoretical calculated and experimental obtained R_M -values of chromatographed substances for differemt mobile phase compositions are investigated. A good

agreement between theoretical and experimental data makes possible to foresee on the basis of the correlations between $\log k'$ - and R_M -values the retention in column chromatography.

INTRODUCTION

Considering the wide application of chromatography it is necessary to find relations between the parameters obtain by different chromatographic techniques. Advantages of Thin-layer Chromatography cause that it can be used as a pilot technique for Liquid Column Chromatography.

The possibility of theoretical calculations of R_M -values makes possible to use these data in HPLC conditions. In this purpose it is necessary to define the correlations between R_M and $\log k'$ -values of chromatographed substances for a given mobile phase system. From the study it appears that the simple theoretical dependence $R_M = \log k'$ is not exactly conformable to experimental data. It is caused by different conditions of the chromatographic process on a plate and in a chromatographic column; i.e. a presence of a gas phase in a chamber, a different stationary phase profile on a plate and in a column, a different mobile phase flow-rate, etc. (3,4).

In the paper the graphical correlations between R_M and $\log k'$ -values for some substances in three different mobile phase systems have been shown. The changes of these correlations with the changes of a mobile phase type and its composition are studied.

EXPERIMENTAL

Experimental R_M -values of investigated substances were determined by ascending adsorption thin-layer chromatography.

Silica gel 60 (Merck) was used as an adsorbent. The layer thickness was 0.25 mm. Plates were activated for 2h at 135°C. Chromatograms were developed in thermostatic conditions at 21 ± 0.5 °C in saturated chambers.

As the mobile phases were used pure isooctane, hexane, cyclohexane and chloroform, and their binary mixtures of compositions φ_1 : 0.1 ; 0.3 ; 0.5 ; 0.7 ; 0.9 (φ_1 was a volume fraction of a stronger mobile phase component). As a chromatographed substances were used naphthalene and its methyl derivatives and polycyclic aromatic hydrocarbons. These substances were visualized on chromatograms in iodine pairs or in UV light.

For LCC experiments was used Pay Unicam LC 20 Liquid Chromatograph. Merck Lichrosorb Si 60 of 0.5 μ m particle diameter was used as an adsorbent. The same as in TLC studies substances and binary mixtures were used.

RESULTS AND DISCUSSION

Experimental R_M -values of chromatographed substances were obtained from TLC studies. Ościk's thermodynamic theory of adsorption from multicomponent systems was used as the basis of our investigations (5-7). The equation resulting from it makes us possible to calculate theoretical R_M -values for studied substances :

$$R_{M1,2} = \varphi_1 \Delta R_{M1,2} + (\varphi_1^s - \varphi_1) (\Delta R_{M1,2} + A_z) + R_{M2} + Y \quad (1)$$

where $R_{M1,2}$, R_{M1} , R_{M2} are R_M -values of a given solute in a mixed mobile phase "1+2" and in pure solvents "1" and "2" respectively; $\Delta R_{M1,2} = R_{M1} - R_{M2}$ is the difference

of the R_M -values of a solute in pure solvents "1" and "2"; ψ_1 is a volume fraction of a stronger "1" component of a mobile phase; the value A_2 represents molecular interactions between molecules of the chromatographed substance and these of the components of a solvent; Y represents the influence of the kind of the chromatographed substance and components of a binary mobile phase on the parameters discussed. In the case of ideal solvents this value is equal to zero or it is negligible small in the case of non-ideal solvents.

From experimental data $\log k'$ -values of chromatographed substances were calculated.

Fig.1a,b shows the graphical relations between theoretical calculated on the base of eq.1 and experimental obtained R_M -values for chosen substances for given mobile phase compositions for two different mixed phases. In all cases a good agreement of theoretical and experimental values of function $R_M = f(\psi_1)$ has been obtained. Eq.1 describes satisfactory experimental data for mixed phases composed of type N or A solvents and for type N(B) substances (8). This results from the fact that systems of this type are conformable to the theoretical assumptions of this equation, e.g. insignificant and non-specific interactions between solvent and solute molecules.

In the case of type N + N solvents, e.g. isooctane-hexane or hexane-cyclohexane, the plots of $R_M = f(\psi_1)$ relationships have flat shapes (Fig.1a). That means that the increase of ψ_1 -value not influences considerably on

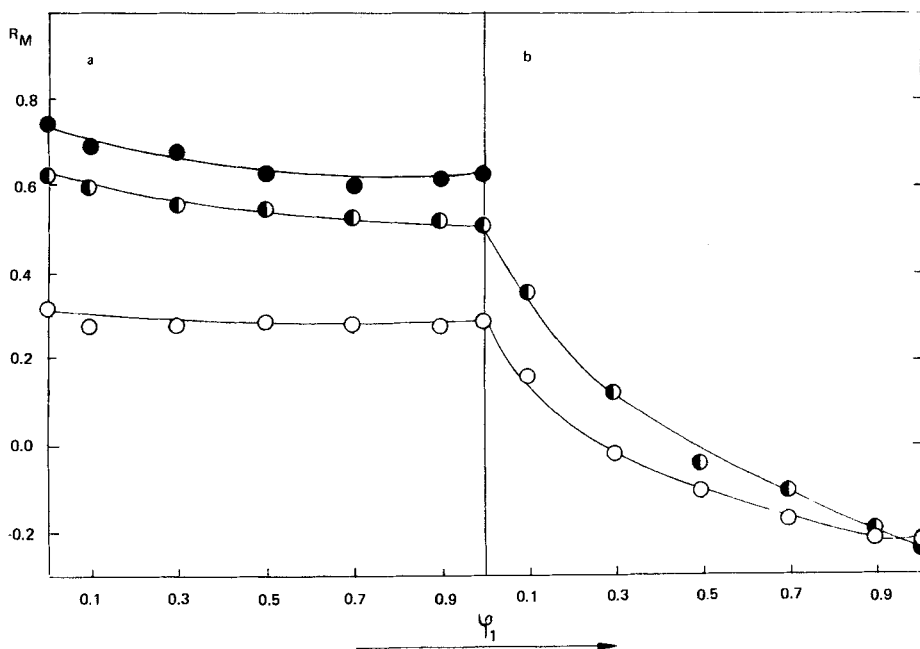


Fig.1

The graphical relationships between theoretical (lines) and experimental (circles) R_M -values and the composition of the mobile binary solvents phase;

(a) the mobile phase: isooctane - hexane,

(b) the mobile phase: hexane - chloroform,

○ 1,5-dimethylnaphthalene,

◐ phenantrene,

● fluoranthene.

the retention of chromatographed substances in this kind of mobile phase systems. Both of these mobile phases are mixtures of non-active solvents which non-specific interact with investigated substances, and that the increase of R_M -value not changes the elution strenght of a given mobile phase.

The different situation is in the case of hexane-chloroform mobile phase (type N +A). The curves illustrated $R_M = f(\psi_1)$ relationships for this system have steep shapes (Fig.1b). It is comprehensible when we notice that the more active component of a mobile phase (chloroform) is able to arise stronger intermolecular interactions with regard to its electron-acceptor properties. The increase of chloroform amount in a mobile phase from $\psi_1 = 0.0$ to 0.3 influences considerably on R_M -values of chromatographed substances. The R_M -values not change so considerably with a further increase of ψ_1 -values.

In the range of low ψ_1 -values (0.0 - 0.3) there are a continuous increase of chloroform amount in an adsorption phase and that effects on the retention of chromatographed substances (9).

On the base of experimental obtained $\log k'$ -values and experimental obtained and theoretical calculated R_M -values of studied substances the correlations $\log k' = f(R_M)$ are illustrated graphical for given mobile phase compositions. From the theoretical equation $\log k' = R_M$ it seems that these plots ought to be straight-lines with slopes equal to unity and that they are independent on the kind and the composition

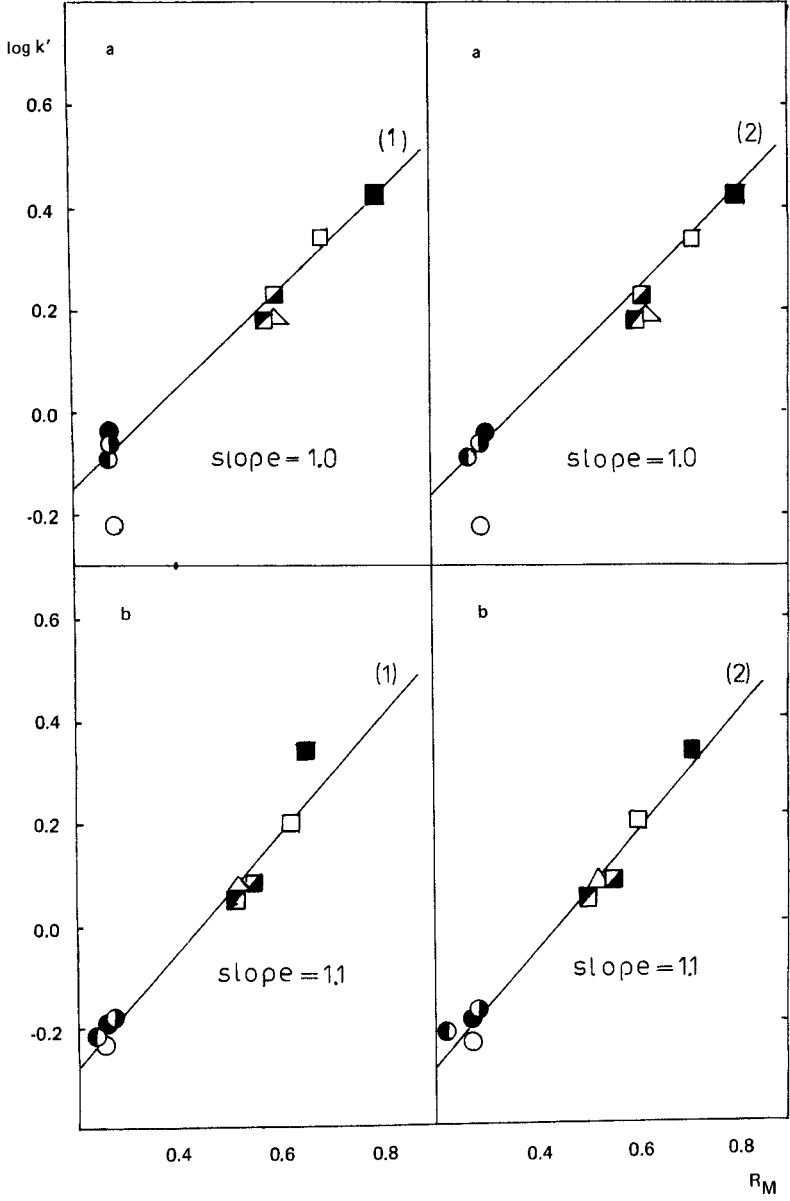
of a mobile phase. From experimental data it arises that though these graphical relationships are straight-lines the slopes of them are not only different from unity but are different for various mobile phase compositions as well.

Fig.2 and 3 show the graphical relationships between experimental $\log k'$ -values and theoretical and experimental R_M -values for chromatographed substances for hexane - cyclohexane and isooctane - hexane systems and for given mobile phase compositions. These correlations are straight-lines of near unity slopes. From the comparison of graphical calculated slopes it seems that they change insignificantly with mobile phase compositions. In practice they receive similar values in a narrow range for both mobile phases. The oscillations of slope values result rather from experimental errors than from changes in mobile phase properties resulting from the changes in its composition.

The analysis of the plots on Fig.2 and 3 shows that R_M -values for naphthalene and its methyl derivatives are near the same in both mixed mobile phases irrespective of the site of the substituting groups in the naphthalene molecule. This results from small values of the adsorption energies of these groups on silica gel (10).

In the case of polycyclic aromatic hydrocarbons the differences in R_M -values result from the fact that interactions between solvent and solute molecules are negligible and a higher influence of the structural effects of these molecules can be observed.

It can be noticed from Fig.2 and 3 that the correlations $\log k' = f(R_M)$ are different for two groups of chromatographed



substances; i.e. for naphthalene and its methyl derivatives and for polycyclic aromatic hydrocarbons. The distribution of these correlations can be explained by structural effects of these organic compounds. To study this problem more precisely is necessary to gather much more experimental data.

A different situation is in the case of hexane - chloroform system (N + A type). Fig.4 shows the correlations between $\log k'$ and R_M -values for chosen mobile phase concentrations for this system. The distinct changes of the line slopes with changing the mobile phase composition are observed. The straight-lines become more steep while the amount of chloroform (φ_1) in a mobile phase increases, e.g. the increase of the mobile phase elution strength influences on the shapes of the straight-lines illustrated graphically the relationships $\log k' = f(R_M)$ (9). For this system hexane - chloroform, (N + A type) the separation of these correlations for two groups of compounds is not observed.

Fig.2

The correlations between experimental $\log k'$ -values and experimental (line 1) and theoretical (line 2) R_M -values with using isooctane - hexane as the mobile phase;

(a) $\varphi_1 = 0.1$; (b) $\varphi_1 = 0.7$;

- naphthalene, ○ β -methylnaphthalene, ● 1,3-dimethylnaphthalene,
 ● 1,5-dimethylnaphthalene, ▣ anthracene, ▤ pyrene,
 ■ chrysene, □ fluoranthene, △ phenanthrene.

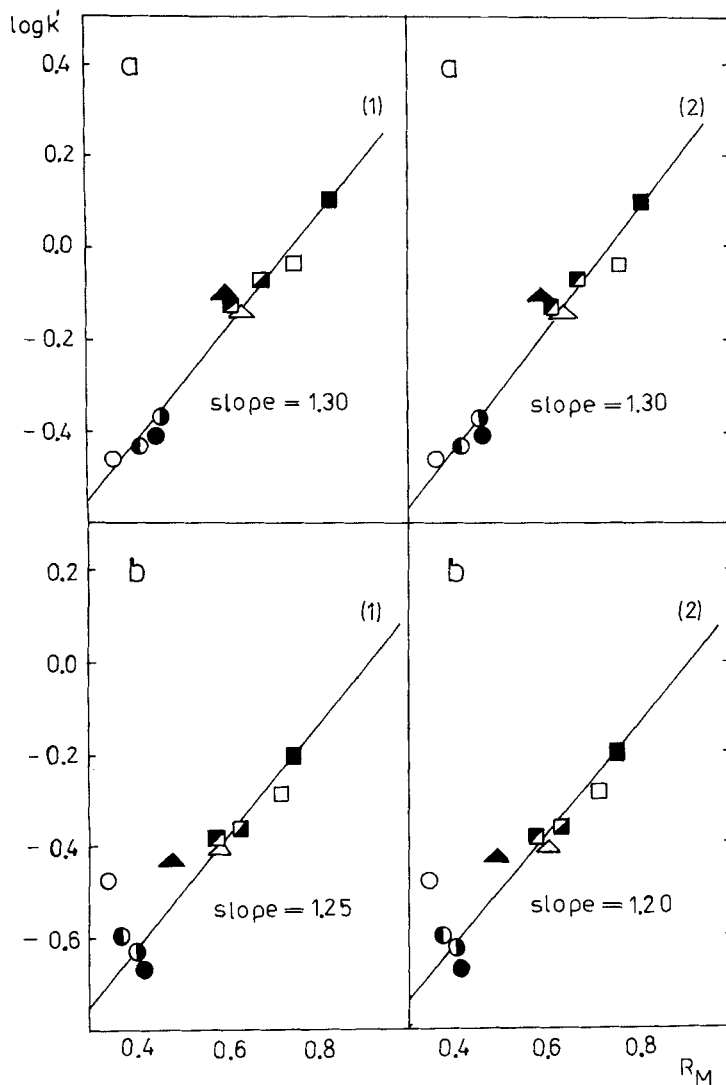


Fig.3

The correlations between experimental $\log k'$ -values and experimental (line 1) and theoretical (line 2) R_M -values with using hexane - cyclohexane as the mobile phase ;

(a) $\Psi_1 = 0.1$; (b) $\Psi_1 = 0.3$;

○ naphthalene, ◐ β -methylnaphthalene, ● 1,3-dimethylnaphthalene,
 ● 1,5-dimethylnaphthalene, ◼ anthracene, ◑ pyrene,
 ■ chrysene, □ fluoranthene, △ phenanthrene, ▲ fluorene.

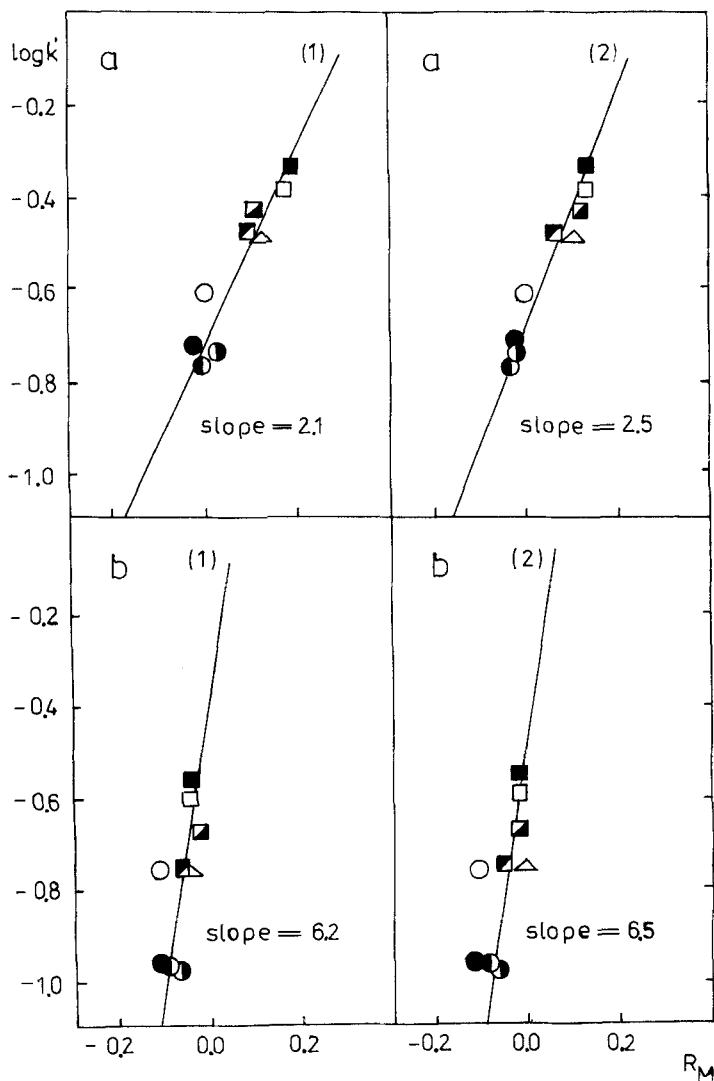


Fig.4

The correlations between experimental $\log k'$ -values and experimental (line 1) and theoretical (line 2) R_M -values with using hexane - chloroform as the mobile phase †

(a) $\psi_1 = 0.3$; (b) $\psi_1 = 0.5$;

the remaining explanations as above

From the data presented in this paper it appears that the correlations between $\log k'$ and R_M -values for chromatographed substances are straight-lines and, as it was noticed, their shapes depend on the kind and the composition of a mobile phase.

The above considerations signalizes the possibility of the use TLC-data, experimental obtained or theoretical calculated on the base of the eq.1, in more complex and time-wasting chromatographic technique as Liquid Column Chromatography, and that TLC can be used as a pilot technique for more precise studies.

REFERENCES

1. W.Gołkiewicz, *Chromatography*, 14,7 (1981) p.411
2. W.Gołkiewicz, *Chromatography*, 14, 11 (1981)p.629
3. I.I.Kirkland, "Modern Practice of Liquid Chromatography"
Wiley-Interscience, New York, 1971
4. J.C.Giddings, *Nature*, 184, 357 (1959)
5. J.Ościk, *Przemysł Chemiczny*, 40 (1961) p.279, 44 (1965) p.129
6. J.Ościk, *Roczniki Chemii*, 31 (1957) p.621, 34 (1965) p.754
7. J.Ościk, "Physical Adsorption from Multicomponent Phases"
Nauka, Moscow, 1972 p.132
8. G.C.Pimentel, A.L.McClellan, "The Hydrogen Bond", Freeman,
San Francisco, 1963
9. R.W.P.Scott, P.Kucera, *J.Chromatogr.Sci.*, 11, 83 (1973)
10. L.R.Snyder, "Principles of Adsorption Chromatography",
Dekker, New York, 1968 p.414